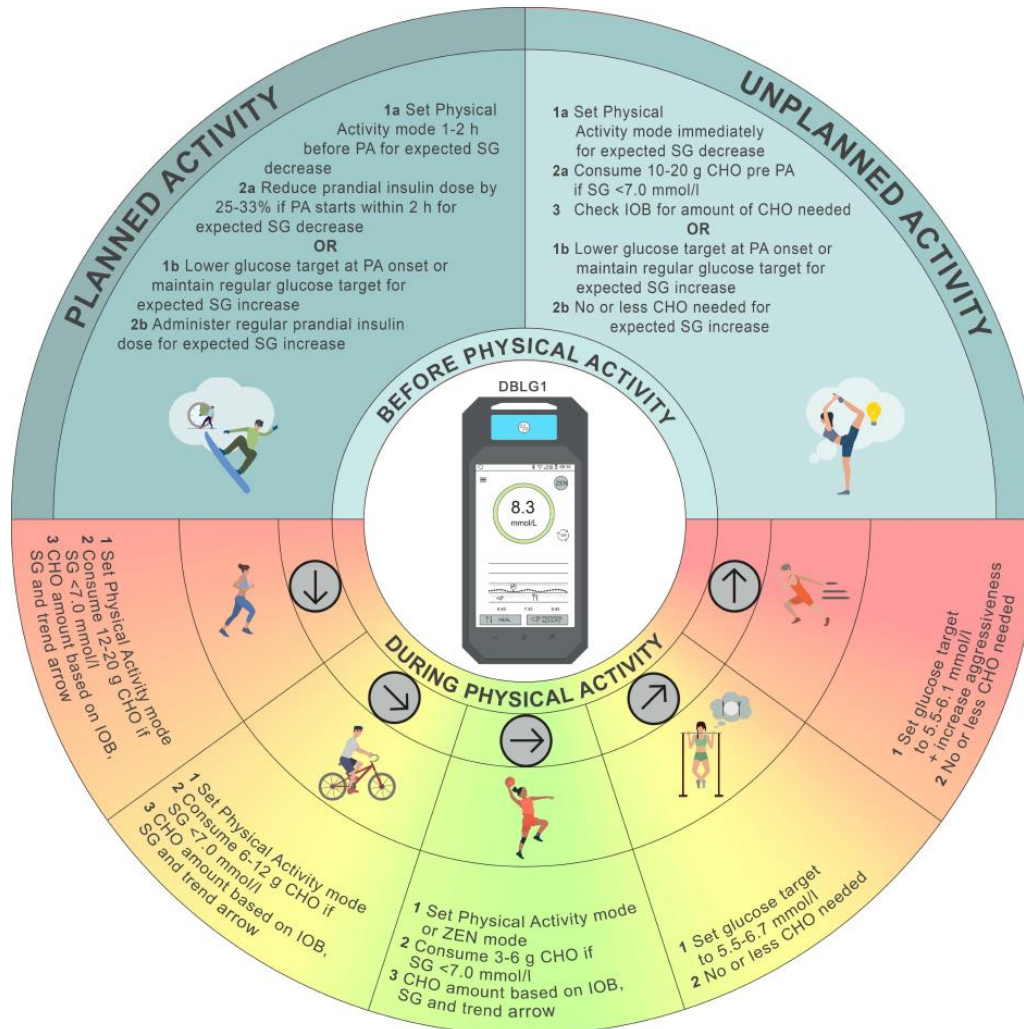


Recommendations for use of the DBLG1 system to manage glucose outcomes during physical activity



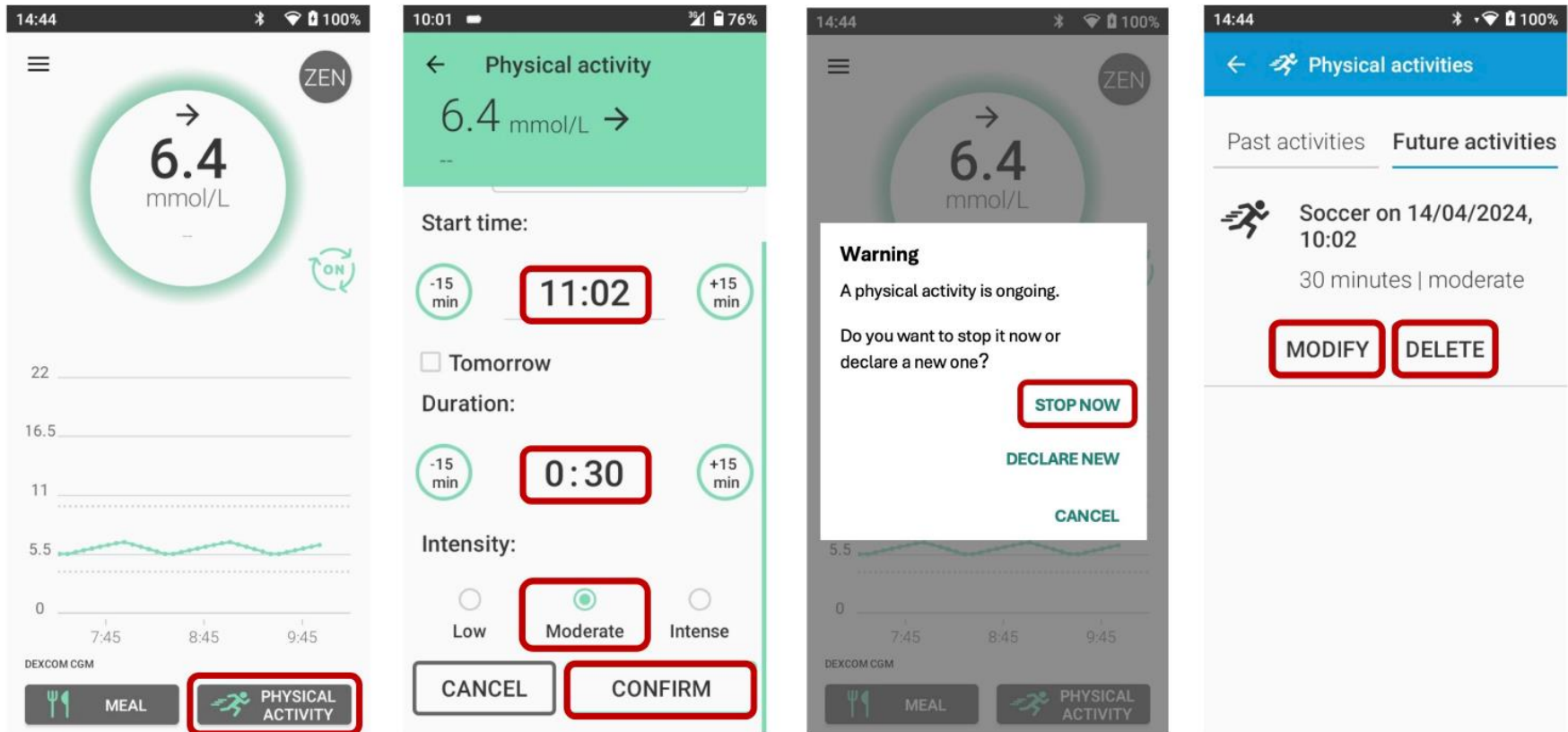
Moser et al (2024) Diabetologia DOI 10.1007/s00125-024-06308-z

© The International Society of Pediatric and Adolescent Diabetes and the European Association for the Study of Diabetes 2024. Distributed under the terms of the CC BY 4.0 Attribution License

(<http://creativecommons.org/licenses/by/4.0/>)

Diabetologia

Illustration of how to start, stop and modify/delete the Physical Activity mode in the DBLG1 system



Moser et al (2024) Diabetologia DOI 10.1007/s00125-024-06308-z

© The International Society of Pediatric and Adolescent Diabetes and the European Association for the Study of Diabetes 2024. Distributed under the terms of the CC BY 4.0 Attribution License

(<http://creativecommons.org/licenses/by/4.0/>)

Diabetologia